



# ACTELLIC®

## 50 EC

Insecticide for the control of grain storage pests (except larger or greater grain borer)-in bulk-stored grain, bagged grain, storage surfaces. Also for the Public Health use for the control of adult mosquitoes and cockroaches (on mud houses with grass thatch).

REGISTRATION NO. PCPB(R) 0014

GUARANTEE /DHAMANA: pirimiphos-methyl 500 g/lt.

COMMERCIAL AND AGRICULTURAL CLASS

KEEP LOCKED OUT OF REACH OF CHILDREN.

READ LABEL AND LEAFLET BEFORE USING.

**Incase of Poisoning Call Toll free No.:**

080072002/0800730030 (24hr)

Shelf Life: 2 years from date of manufacture in original unopened container

(Maisha Rafuni: miaka miwili kuanzia tarehe ya kutengenezwa ikiwa imehifadhiwa katika viwekeo vyake asili ambavyo havijafunguliwa).

**Manufactured by/ Imetengenezwa na:**

Syngenta Ltd UK

**Distributor/ Wauzaji:**

Syngenta East Africa Ltd.,

P.O. Box 30393, 00100 NAIROBI

Tel.: +254 03018000/ 703019000; Fax: +254 202714864

**Batch No. / Nambari ya kifurushi:**

**Date of Manufacturer / Tarehe ya kutengenezwa:**

**Expiry date / Tumia kabla:**

**Net Content / Ujazo: 20 Litres / Lita 20**

Kiua dudu kidhibiti ya kufukuza na kuua akina mende na mbu kwenye stoo, nje na ndani ya nyumba.

NAMBARI YA KUSAJILIWA PCPB(CR) 0014

DHAMANA: pirimiphos-methyl 500 g/lt.

KUNDI YA KILIMO NA BASHARA

WEKA MBALINAWATOTO.

SOMA KWA UANGALIFU MAELEZO YALIYO AMBATANISHWA KABLA HUJAANZA KUTUMIA DAWA HII.

**Kukiwa na Kusumika piga simu isitozwa Nambari:**  
0800720021 / 0800 730030 (Masaa 24)

Product names marked ® or ™, the SYNGENTA Logo and the CP FRAME are Trademarks of a Syngenta Group Company



**CAUTION**



**syngenta®**



# ACTELLIC<sup>®</sup>

## 50 EC

Insecticide for use in Public Health for the control of adult mosquitoes and cockroaches.

### DIRECTIONS FOR USE

1. Fogging add 25 ml white oil or colourless kerosene and apply as fog to treat 500 m<sup>3</sup> of air space.
  2. Warehouse and household control of cockroaches.
  3. Mosquito Larviciding – control of mosquito larvae.
- See recommendations for use on this page.

**Handling Precautions:** Wear rubber gloves, face shield and boots when handling the concentrate. Do not use if under medical advice not to work with organophosphorus compounds. Concentrate can irritate eyes, skin and respiratory system. Do not smoke, eat or drink when handling the product. Avoid spray mist in treatment area. Change clothes and wash body after work.

**Storage:** Store in original tightly closed container away from children, livestock and foodstuff. Do not store above 35°C. In case of fire, extinguish with dry chemical, foam or water spray. Do not use water jet.

### Environmental Hazard:

Toxic to fish. Do not contaminate rivers, dams and ponds. Toxic to bees. Do not spray when bees are actively foraging in an area.

### FIRST AID INSTRUCTION

Eye splashes: wash eyes with plenty of clean water for 15 minutes. See a doctor.

Skin splashes: Wash off immediately with water and soap. Remove contaminated clothing. If swallowed do not make the patient vomit. Take the patient and this label information to a doctor at once. Remove patient from contaminated area and keep the patient in a cool and comfortable place. Contact a doctor immediately.

### TOXICOLOGICAL INFORMATION

Symptoms of poisoning

These include: nausea, blurred vision, tightness in chest, headaches, loss of co-ordination and abdominal cramps.

Severe poisoning may lead to respiratory arrest. Oxygen and artificial respiration maybe required.

Medical treatment: Perform gastric lavage, taking care to prevent aspiration of gastric contents.

Antidote: 2-8 mg intramuscularly, every 20 minutes until signs of atropinisation appear. If possible, pralidoxime should be given at the same time, intramuscularly at a dose of 1 g in 2-3 ml water. Repeat doses depending on clinical response.

### NOTICE TO USER:

This pest control product is to be used only in accordance with the directions on the label. Its an offence under the Pest Control products Act to store a pest control product under unsafe conditions.

### GUARANTEE:

Seller's guarantee is limited to the terms set out on the label and subject thereto, the buyer assumes the risk to persons or property arising from the use or handling of this product and accepts the product on that condition. Before applying the product read the attached product label and accompanying packaging leaflet. Use pesticides safely.

**Insecticide for the control of grain storage pests (except larger or greater grain borer) - in bulk-stored grain, bagged grain, storage surfaces. Also for the Public Health use for the control of adult mosquitoes and cockroaches (on mud houses with grass thatch)**

**Recommended rates of Application in public health pest**

Target Pest and Situation	ACTELLIC 50 EC/ area	Diluent	ACTELLIC per litre of spray solution	Dilution ratio	Amount of spray solution per unit area applied
<b>Residual</b>					
Malaria mosquitoes	2 -4 ml/m <sup>2</sup>	water	50-100 ml (High dose for Hgher infestation low dose for low infestation) 25 ml	1 + 20 to 1 +10 1 + 40	Apply spray solution at a rate of 40 ml per m2 of surface
Flies and nuisance mosquitoes: Indoors	1 ml/m <sup>2</sup>	water			
Flies: long persistence outdoors	2 - 4 ml/m <sup>2</sup>	water	50-100 ml	1 + 20 to 1 +10	
Cockroaches	2 - 4 ml/m <sup>2</sup>	water	50-100 ml	1 + 20 to 1 +10	
<b>Space treatment</b>					
<b>Mosquito</b>					
Thermal fog hand held	200 ml/ha	kerosene/ diesel	100 ml	1 + 10	2 lt./ha
vehicle mounted	200 ml/ha	kerosene/ diesel	40 ml	1 + 25	5 lt./ha
Cold aerosol UL V ground	200 ml/ha	kerosene/ diesel	400 ml	1 + 1.5	0.5 lt./ha
aerial	400 ml/ha	kerosene/ diesel	200 ml	1 + 4	2 lt./ha
<b>Mosquito larvicide</b>					
short persistence/shallow water	100 ml/ha	water	1 ml	1 + 1000	100 lt./ha
long persistence deep water	1000 ml/ha	water	10 ml	1 + 100	100 lt./ha

### **Storage**

Store in a cool and dry place in original sealed container, away from food and feed and the access of unauthorized persons, children, and animals. Avoid storage below above +35°C.

### **STORED GRAIN**

Bulk: Mix 20 ml of ACTELLIC 50 EC per litre of water.

Apply 0.5 litre per tonne of grain as it flows to the bulk store.

### **Stored surfaces**

Mix 200 ml in 20 litres of water and spray over 100 m<sup>2</sup> of surface (wet to run-off point). Spray also the ground surrounding the store. Ventilate store before re-entry

### **Safety Information**

KEEP LOCKED OUT OF REACH OF CHILDREN, OTHER PERSONS AND ANIMALS.

### **Operator Safety**

Wear protective clothing when handling the concentrate or diluted spray mixture. AVOID getting product in contact with skin, eyes or clothing. DO NOT inhale dust or spray mist.

DO NOT eat, drink or smoke during work. Wash hands and face before eating, drinking or smoking. In General: Change working clothes daily. The use of this product does not require cholinesterase monitoring in operators.

### **Spillage and Leakage**

Collect spilt material thoroughly and bury it in a safe place or put it in a waste bin or in a plastic bag and dispose of on a landfill-site approved for pesticides.

Note: Spilt product must not be re-used.

### **Product and Container Disposal**

Provided there are no local legal or other regulations, the following procedure is recommended:

Plastic containers should be triple rinsed and disposed of via a waste management contractor for recycling or energy recovery. Empty the containers completely, rinse 3 times and add the rinse solution to the spray tank. Hazardous material, which cannot be triple rinsed (e. g. paper) should be disposed of at a site licensed to accept hazardous waste. Dispose of surplus product with a waste management contractor or on a landfill site approved for pesticides.

Note: Always comply with local legal requirements

### **Environmental Hazard**

Toxic to fish. Do not contaminate rivers, dams and ponds. Toxic to bees. Do not spray when bees are actively foraging in an area.

### **FIRST AID MEASURES**

KEEP STRICTLY AT REST AS CONTINUED MOVEMENT ENHANCES THE EFFECT OF CHOLINESTERASE INHIBITION.

If poisoning is suspected stop work immediately and call a physician. Show label to the physician.

In case of contact with skin, remove contaminated clothing; wash affected body parts immediately with plenty of water and soap. Rinse splashes from eyes with abundant fresh and clean water for several minutes. If inhaled move to clean air. If swallowed, repeatedly administer medicinal charcoal in plenty of water. Seek medical advice immediately if a large volume of concentrate was ingested.

Note: Never give anything by mouth to an unconscious patient and never induce vomiting

### **TOXICOLOGICAL INFORMATION**

Symptoms of poisoning

These include: nausea, blurred vision, tightness in chest, headaches, loss of co-ordination and abdominal cramps.

Severe poisoning may lead to respiratory arrest. Oxygen and artificial respiration may be required.

Medical treatment: Perform gastric lavage, taking care to prevent aspiration of gastric contents.

Antidote: 2-8 mg intramuscularly, every 20 minutes until signs of atropinisation appear. If possible, pralidoxime should be given at the same time, intramuscularly at a dose of 1 g in 2-3 ml water. Repeat doses depending on clinical response.

**Incase of Poisoning Call Toll free No.:** 0800 720021 / 0800 730030 **(24hr)**

### **NOTICE TO USER**

This pest control product is to be used only in accordance with the directions on this label. It is an offence under the Pest Control Products Act to use or store a pest control product under unsafe conditions

### **WARRANTY**

Seller's guarantee is limited to the terms set out on the label and subject thereto, the buyer assumes the risk to persons or property arising from the use or handling of this product and accepts the product on that condition.

**Kiua dudu chenye nguvu ya kufukuza na kuua wadudu aina nyingi kama mende, inzi, viroboto na funza wa mbu kwenye sitoo, nje na ndani ya nyumba.**

#### **Matumizi**

Kwenye majumba na mazingira kuthibiti mbu, inzi, mende, papasi, n.k.

Kunyunyiza kuacha ukoko wa dawa - Changanya lita 1 Actellic na nyunyiza luta, dari na samani katika nyumba na mazingira yanayozunguka nyumba, mimea na sehemu wadudu wanakozaliana.

Kunyunyiza kwa ndege – changanya mililita 200 Actellic na mililita 800 mafuta ya taa kwa kunyunyiza hekta moja.

Kufukiza – changanya mililita 100-200 Actellic na lita 2-4 za mafuta ya taa na fuliza kwenye hekta moja.

Kuthibiti viluwilwi kwenye madimbwi ya maji - Nyunyiza lita moja Actellic kwa kila sentimita 10 za maji.

#### **Nafaka zilizohifadhiwa**

Changanya mililita 10 ACTELLIC 50 EC kwa lita moja ya maji. Tumia hii dawa kwa kila tani ya nafaka huku dawa ikijisambaza ndani.

#### **Kuta na sakafu za ghala**

Changanya mililita 200 ACTELLIC 50 EC kwa lita 20 za maji. Nyunyiza sawa sawa eneo la zaidi ya mita mraba 100. Pia nyunyiza sehemu ya chini nje kuzunguka ghala. Iruhusu hewa kuenea ndani kabla ya kuingia kwenye ghala lena.

#### **Hifadhi**

Hifadhi dawa katika sehemu kavu yenye kivuli, mbali na watoto, vyakula na wanyama. Joto katika sehemu ya hifadhi jisizidi +35°C. Makasha ya dawa yasiyapangwe zaidi ya mita mbili kwenda juu, kwani ukifanya hivyo makasha hayo yanaweza kupondeka na dawa kuharibika.

#### **Tahadhari**

WEKA MBALI NA WATOTO, watu wasiohusika nayo na mifugo

#### **Unapokoroga dawa**

Vaa kinga ya macho (walau miwani). Actellic isoyochanganywa yaweza kudhuru macho yako.

Ikiingia machoni, safisha kwa maji mapema. SOMA HUDUMA ZA KWANZA.

Vaa glavu za mpira. Actellic isiyochanganywa yaweza kufanya ngozi kuwasha. Ikgusana na ngozi safisha sehemu hiyo mapema. Kama ikimwagikia nguo, badilisha na zifue.

#### **Unapopiga dawa**

Unapofukiza Actellic, vaa kinga ya uso na kufunika pua na mdomo. Epuka kugusana na matone ya dawa.

Unaponyunyiza Actellic nyumbani, epuka kunyunyiza vyakula na vifaa vya kulia. Usinyunyize wakati nyuki warukaruka shambani.

#### **Baada ya kupiga dawa**

Oga kwa maji ya sabuni. Badilisha nguo za kazi na uzifue. Safisha vyombo tupu vya dawa.

#### **Hadhari za kuibebea**

Onyo – inaweza kusababisha kuwasha kwa macho na ngozi. Vaa glavu za mpira, kifuniko cha uso pia gumboots unapotumia dawa. Usitumie kama umeshauriwa na daktari kutotumia kikazi dawa zilizotengenezwa kwa msingi wa madini ya chuma. Dawa ambayo haijayeushwa yaweza kuwasha macho, ngozi na sehemu za kupitia hewa. Yaweza kuwaka. Usivute, usile au kunywa chochote unapofanya kazi na dawa; na kablay ya kufanya hivo, osha mikono na uso. Jahadhari mvuke wake. Baada ya kazi osha nguo za kazi na osha mwili.

#### **Yaweza waka**

Iweke mahali vuguvugu na penye giza. Kiwango cha juu cha joto si chini ya 35°C. Kama moto utatokea uzime na kemikali ya unga, povu na maji. Usitumie mrija wenye kutoa maji kwa msukumo sana.

## **Kutupa**

Mkebe uliokwisha dawa usitumie kwa kazi nyingine yoyote. Utoboe na kuufukia mbali na njia za maji. Dawa iliyobakia au uchafu wake uliooshwa toka bomba la kazi vitupe mbali na vianzio vya maji. Maji yatumike kusifisha maeneo yaliyochafuka huku yakitiririka mbali na njia za maji ya kawaida.

## **Hatari kwa mazingira**

Ni sumu kwa samaki. Usichafue mito, visima, n.k., kwa kumwaga dawa ovyo ovyo au kutupa mikebe mitupu. Ni sumu kwa nyuki. Usinyunyize mimea inaochanua maua.

## **MAELEZO YA HUDUMA ZA KWANZA**

Mirusho ya machoni: Y aoshe na maji mengi safi kwa dakika 15. Muone daktari.

Mirusho ya ngozini: Osha haraka kwa sabuni na maji. V ua nguo zilizochofuliwa. Ikimezwa, usimtapishe mgonjwa.

## **Maelezo ya Kuondoa sumu**

Kama kuna shaka kuwepo sumu yake haraka dunga sindano ya mshipi na dawa ya atr opine kwa 2.5 mg ikifuatiwa na 2 mg kila nusu saa. W akati huohuo dawa ya Pralidoxine (p-25 au P-2M) itolewe, 1 g kwa 2-3 mililita ya maji kwa sindano inayodungwa kwenye mshipa. Zisitolewe dawa za kutuliza. Rudia matumizi ya dawa kutegemea maendeleo ya matibabu.

Dalili za sumu: Hizi ni pamoja na kuchefuchefu, kutoona vizuri, mbano wakifuani, kuumwa na kichwa, ulegevu wa viungo na maumivu ya tumbo. Hali ikiwa mbaya zaidi huenda kukawa na tatizo la kupumua, pengine itakuwa lazima kumpa hewa ya oksijeni na kumsaidi apumue. PELEKA MJERUHI KW A DAKT ARI

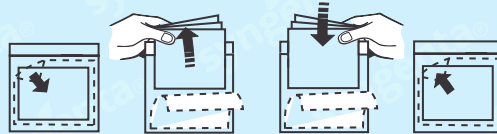
**Kukiwa na Kusumika piga simu isitotozwa Nambari: 0800 720021 / 0800 730030(Masaa 24)**

## **ILANI KWA MTUMIAJI**

Dawa hii ni sharti kutumiwa inavyopendekezwa hapa. Unaweza kushtakiwa usipotumia na kuweka kwa njia ya sawa.

## **DHAMANA**

Dhamana ya muuzaji ni maelezo yaliyo kwenye kibandiko ambayo ni lazima yafuatwe kikamilifu. Mnunuzi lazima akubali hatari zozote zinazoweza kutokana na matumizi ya dawa hii kwa binadamu au mali na lazima aikubali dawa hii katika hali hiyo.



# **ACTELIC**<sup>®</sup> **50 EC**

**Insecticide for use in Public Health for the control of adult mosquitoes and cockroaches**

#### **DIRECTIONS FOR USE**

1. Fogging add 25 ml white oil or colourless kerosene and apply as fog to treat 500 m<sup>2</sup> of air space.
2. Warehouse and household control of cockroaches.
3. Mosquito Larviciding – control of mosquito larvae.

See recommendations for use on this page.

**Handling Precautions:** Wear rubber gloves, face shield and boots when handling the concentrate. Do not use if under medical advice not to work with organophosphorous compounds. Concentrate can irritate eyes, skin and respiratory system. Do not smoke, eat or drink when handling the product. Avoid spray mist in treatment area. Change clothes and wash body after work.

**Storage:** Store in original tightly closed container away from children, livestock and foodstuff. Do not store above 35°C. In case of fire, extinguish with dry chemical, foam or water spray. Do not use water jet.

#### **Environmental Hazard:**

Toxic to fish. Do not contaminate rivers, dams and ponds. Toxic to bees. Do not spray when bees are actively foraging in an area.

#### **FIRST AID INSTRUCTION**

Eye splashes: wash eyes with plenty of clean water for 15 minutes. See a doctor.

Skin splashes: Wash off immediately with water and soap. Remove contaminated clothing. If swallowed do not make the patient vomit. Take the patient and this label information to a doctor at once. Remove patient from contaminated area and keep the patient in a cool and comfortable place. Contact a doctor immediately.

#### **TOXICOLOGICAL INFORMATION**

Symptoms of poisoning

These include: nausea, blurred vision, tightness in chest, headaches, loss of co-ordination and abdominal cramps.

Severe poisoning may lead to respiratory arrest. Oxygen and artificial respiration maybe required.

Medical treatment: Perform gastric lavage, taking care to prevent aspiration of gastric contents.

Antidote: 2-8 mg intramuscularly, every 20 minutes until signs of atropinisation appear. If possible, pralidoxime should be given at the same time, intramuscularly at a dose of 1 g in 2-3 ml water. Repeat doses depending on clinical response.

#### **NOTICE TO USER:**

This pest control product is to be used only in accordance with the directions on the label. Its an offence under the Pest Control products Act to store a pest control product under unsafe conditions.

#### **GUARANTEE:**

Seller's guarantee is limited to the terms set out on the label and subject thereto, the buyer assumes the risk to persons or property arising from the use or handling of this product and accepts the product on that condition. Before applying the product read the attached product label and accompanying packaging leaflet. Use pesticides safely.